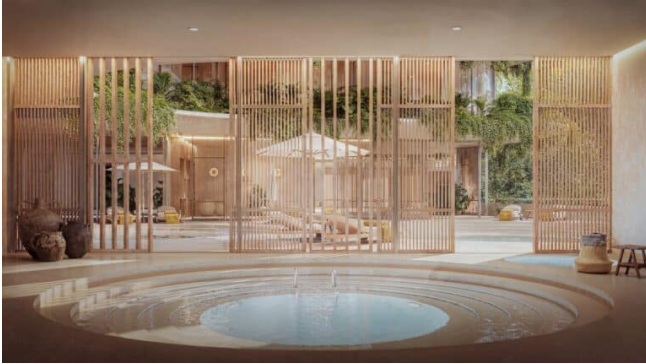


# The Grove 2 Bedroom Oceanview Penthouse

**Price: \$2,806,400 USD**



**Bedrooms: 2**

**Bathrooms: 2**

**Size: 3,961 sq ft**

**Address: Coco Beach, Playa del Carmen Real Estate, Quintana Roo, 77720**

## Description

The two-bedroom penthouses at The Grove offer a more private upper-level living experience in Playa del Carmen, with expansive outdoor space and access to one of the development's most complete amenity programs. Set beside Pulmón Verde and within walking distance of Cisne Beach, The Grove by Coastal Group combines a coastal location with a warm architectural language shaped by curved forms, natural textures, and layered greenery.

Each available two-bedroom penthouse includes two bathrooms and a private rooftop designed for outdoor living. Floor plans range from approximately 3,961 to 4,908 square feet (368 to 456 square meters) total, with interior areas from approximately 962 to 1,344 square feet (89.36 to 124.83 square meters), depending on the residence. Current view options include ocean and city views, as well as mangrove and ocean views.

The rooftop setting is the main distinction of this collection, with space for open-air dining, lounging, a rooftop pool, and a sink and grill area. Inside, the penthouse format is planned with a kitchen, living room, dining area, bedrooms, bathrooms, closets, and terrace spaces, creating a flexible layout for personal use, hosting guests, or longer stays in Playa del Carmen.

Residents at The Grove also have access to reception, concierge service, twenty-four-hour security, elevators, secure underground parking, multiple pools, a gym, yoga studio, spa, sauna, cold plunge, residents-only bistro and café, and an adults-only rooftop with sky bar. Pricing for the available two-bedroom penthouses starts from approximately \$2,806,400 USD, with availability and pricing to be confirmed at the time of inquiry.

## FAQ

### **What makes the two-bedroom penthouse different from the standard condos at The Grove?**

The two-bedroom penthouse format includes a private rooftop, giving the residence significantly more outdoor living space than the standard condo layouts. The rooftop is planned for lounging, dining, a pool, and a sink and grill area.

### **How large are the two-bedroom penthouses at The Grove?**

The available two-bedroom penthouses range from approximately 3,961 to 4,908 square feet (368 to 456 square meters) in total area. Interior areas range from approximately 962 to 1,344 square feet (89.36 to 124.83 square meters), depending on the unit.

### **What views are available from the two-bedroom penthouses?**

Current two-bedroom penthouse options include an ocean and city view residence, as well as a mangrove and ocean view residence. View availability depends on the specific unit selected.

**What is the approximate starting price in USD for a two-bedroom penthouse?**

The available two-bedroom penthouses start from approximately \$2,806,400 USD. Pricing and availability should be confirmed at the time of inquiry.

